

BYD

BYD

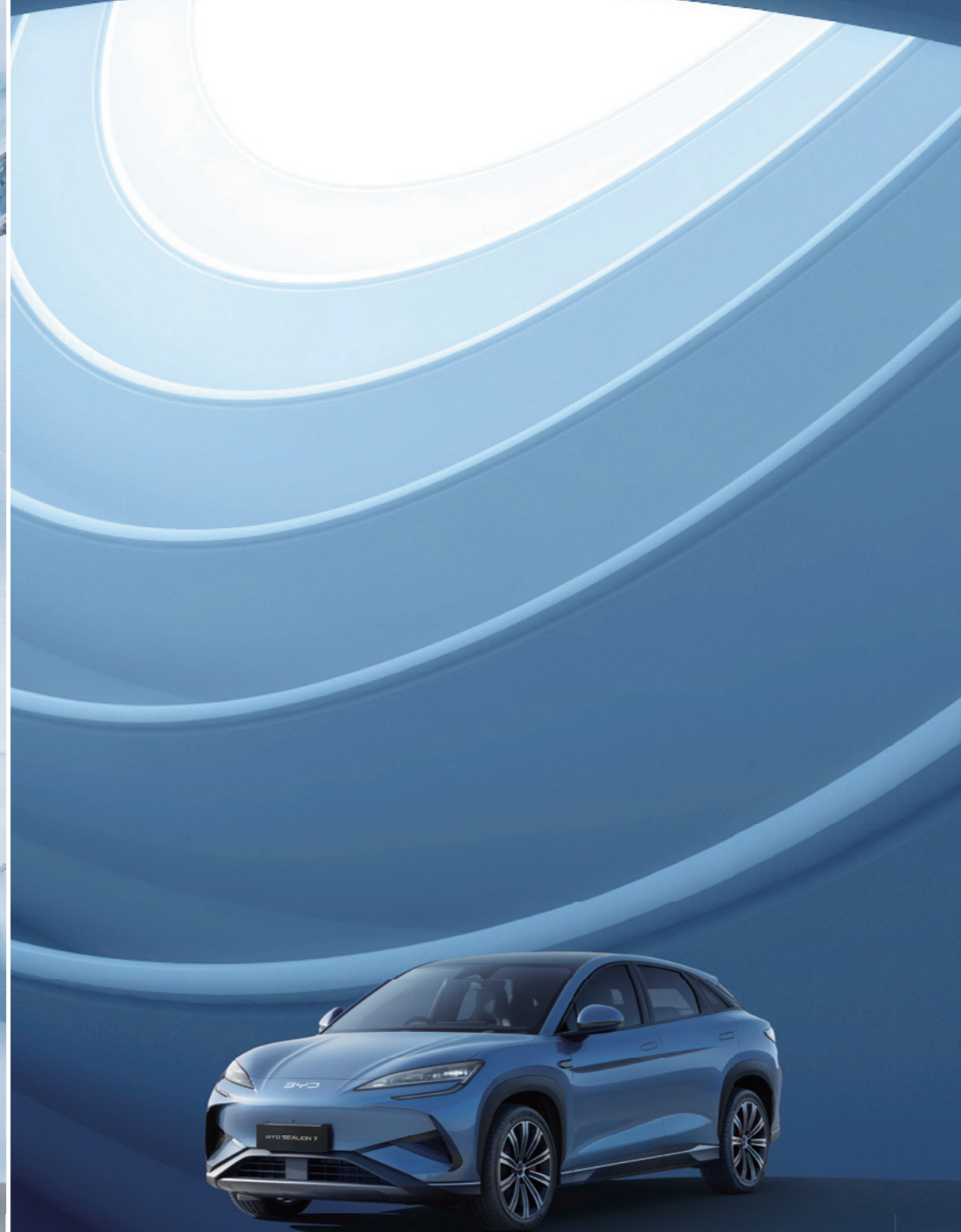
BYD SEALION 7







雪域白  
Aurora White



亞特蘭蒂斯灰  
Atlantis Gray



魔域黑  
Cosmos Black



迷迭灰  
Shark Gray







波光粼影組合大燈

Starlit Ocean Headlights



全新海洋美學設計

New ocean aesthetic design



海際星耀貫穿式尾燈

Ocean Horizon Full-Width Taillights



VTOL移動电站放電

VTOL mobile power station discharge



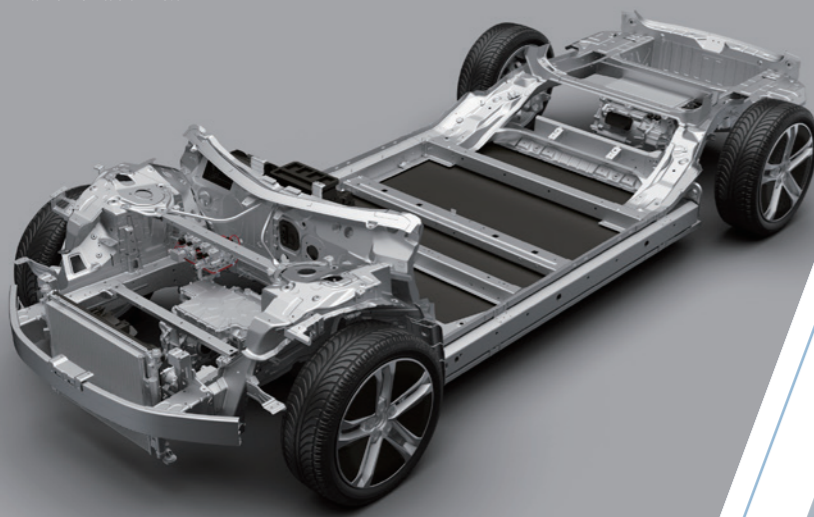
電動感應後備箱

Electric induction trunk



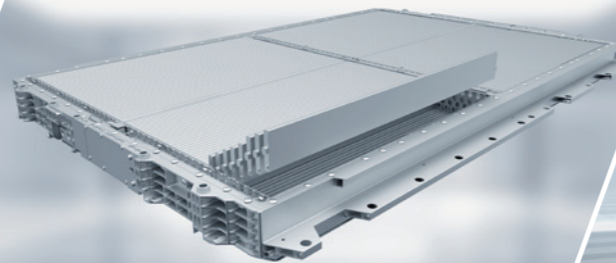
全新升級 e 平台 3.0

All New e-Platform 3.0



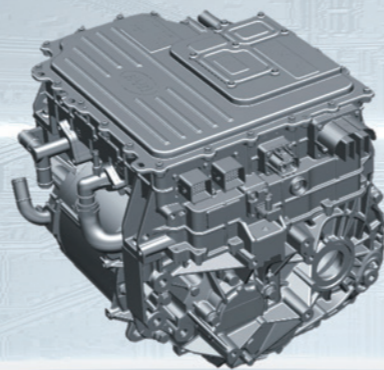
刀片電池

Blade Battery



8合1 電動力總成

8-in-1 Electric Powertrain



390kW/670Nm 強勁動力

390kW/670Nm power



NFC 手機鑰匙

NFC phone keys



20寸逐浪躍動輪殼

20 inch wave swing wheel hub



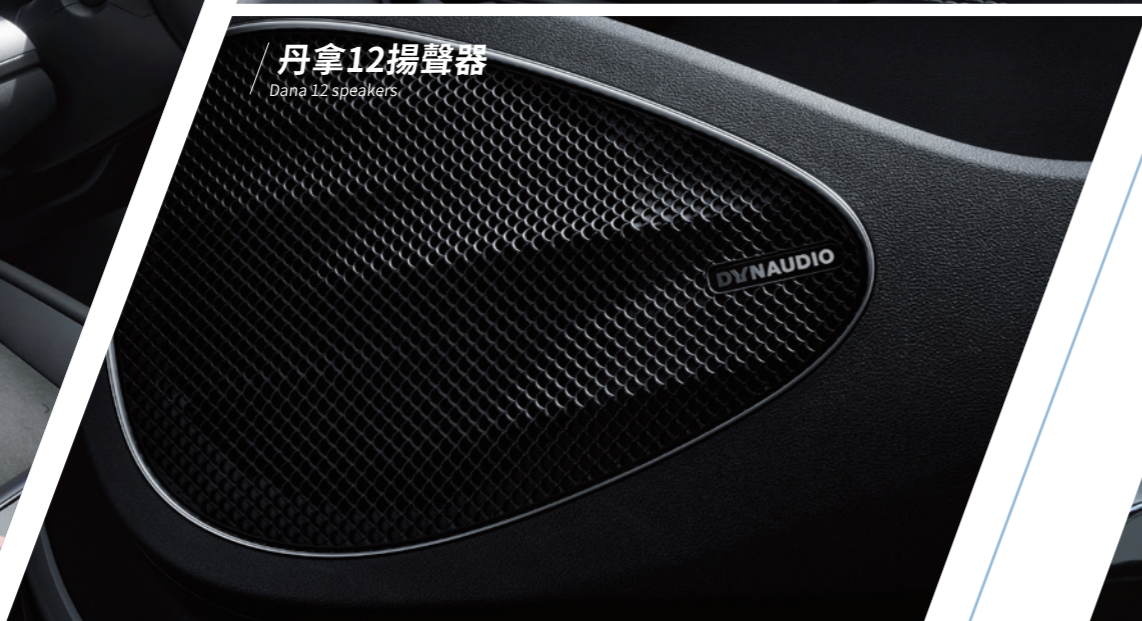


8155 旗艦芯片&15.6 英寸旋轉大屏  
8155 Flagship chip & 15.6 inch rotating large screen



DFM 駕駛員疲勞監測  
DFM driver fatigue monitoring

丹拿12揚聲器  
Dana 12 speakers



一體式多功能真皮座椅  
Nappa leather seats



50W 手機無線充電  
Interior file handle



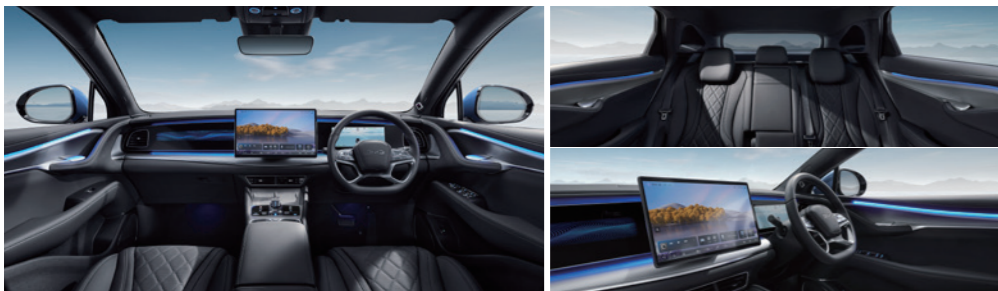
HUD 抬頭顯示  
HUD head-up display



全景天幕+電動遮陽簾  
Panoramic canopy + electric sunshade







## Specifications

尺寸參數	Dimensions	Extended Range		AWD
		Premium		Performance
長	Overall length (mm)	4,830		
寬	Overall width (mm)	1,925		
高	Overall height (mm)	1,620		
前後輪距	Wheel track - front / rear (mm)	1,660/1,660		
軸距	Wheelbase (mm)	2,930		
最小轉彎半徑	Minimum turning radius (m)	5.85		
行李箱容積(前)	Front trunk capacity (L)	58		
行李箱容積(後)	Rear trunk capacity (L)	500		
整備質量	Kerb weight (kg)	2,225		2,340
電機參數	Traction Motor			
驅動方式	Drivetrain	Rear Drive 後驅		All-Wheel Drive 四驅
前電機類型	Front motor type	/		Squirrel cage induction asynchronous motor 異步電機
前電機最大功率	Front motor maximum power (kW)	/		160
前電機最大扭矩	Front motor maximum torque (N·m)	/		310
後電機類型	Rear motor type	Permanent magnet synchronous motor 交流永磁同步電動馬達		
後電機最大功率	Rear motor maximum power (kW)	230		230
後電機最大扭矩	Rear motor maximum torque (N·m)	380		380
系統綜合最大功率	Maximum power (kW)	230		390
系統綜合最大扭矩	Maximum torque (N·m)	380		690
車輛性能	Performance			
百公里加速時間	Acceleration 0-100km/h (s)	6.7		4.5
純電續航里程(NEDC)	Electric range: NEDC Combined Cycle (km)	567		542
座位數	Seating capacity	5		
電池類型	Battery type	BYD Blade Battery 比亞迪磷酸鐵鋰刀片電池		
電池容量	Battery capacity (kWh)	82.5		
車輛懸掛	Chassis			
前懸	Front suspension	Double Wishbone 雙搖臂		
後懸	Rear suspension	Multi-Link 多連桿		
頻率可變阻尼減振器	Frequency Selective Damping (FSD) shock absorbers	Front & Rear 前和後		
前制動	Front disc brake	Ventilated & Drilled 打孔通風盤式		
後製動	Rear disc brake	Ventilated 通風盤式		
前剎車鉗	Front brake caliper	Fixed 固定式卡鉗		
前專屬制動卡鉗	Front brake calipers ( Exclusive Color)	—		●
車輪	Wheel type	Alloy 鋁合金		Alloy 鋁合金
輪胎尺寸	Tyre size	235/50 R19 (F) 255/45 R19 (R)		245/45 R20

全車型標配 Standard for all models	
充電參數	New Energy
交流充電(功率11kW)	AC charging port - Type 2 (11kW)
家用交流充電線	Portable charging cable (mode 2)
直流充電(功率150kW)	DC Charging Port - CCS 2 (150kW)
VTOL移動电站功能	V2L function
回饋制動	Regenerative Braking
安全設備	Safety and Security
前排前安全氣囊	Front airbags - driver & front passenger
前排側安全氣囊	Side airbags - driver & front passenger
前後貫穿式側安全氣簾	Side curtain airbags - front & rear
駕駛員座椅遠端氣囊	Far-side airbags - driver
後排側安全氣囊	Side airbags - rear
前排雙預緊式安全帶	Dual stage pretensioner on front seat belts
後排預緊限力式安全帶(左右席)	Pretensioner on rear seat belts
全車座椅安全帶未系提醒	Seat belt reminder - front & rear
全景影像	360° Camera
前駐車雷達(2個)	Front Parking Sensor (2 Zones)
後駐車雷達(4個)	Rear Parking Sensor (4 Zones)
ISO-FIX兒童座椅固定裝置	ISOFIX Child restraint anchorage points
電子兒童安全鎖	Electronic child lock
智能動力制動系統	Intelligent power brake system
電動助力轉向系統(DP-EPS)	Electric Power Steering (DP-EPS)
牽引力控制系統(TCS)	Traction Control System (TCS)
電子制動力分配系統(EBD)	Electronic Brake Force Distribution (EBD)
坡道起步控制系統(HHC)	Hill Hold Control (HHC)
自動駐車系統	Auto-hold
自適應巡航控制(ACC)	Adaptive Cruise Control (ACC)
車道保持(LKC)	Lane Keeping Control (LKC)
緊急車道保持輔助(ELKA)	Emergency Lane Keeping Assist (ELKA)
車道偏離輔助(LDA)	Lane Departure Assist (LDA)
交通標誌識別(TSR)	Traffic Sign Recognition (TSR)
智能限速提醒(ISA)	Intelligent Speed Alert (ISA)
智能限速控制(ISLC)	Intelligent Speed Limit Control (ISLC)
自動緊急制動(AEB)	Automatic Emergency Braking (AEB)
前向碰撞提醒(FCW)	Forward Collision Warning
前方交通穿行預警(FCTA)	Front Cross Traffic Alert (FCTA)
前方交通穿行制動(FCTB)	Front Cross Traffic Brake (FCTB)
後方交通穿行預警(RCTA)	Rear Cross Traffic Alert (RCTA)
後方交通穿行制動(RCTB)	Rear Cross Traffic Brake (RCTB)
後向碰撞提醒(RCW)	Rear Collision Warning (RCW)
開門安全提醒(DOW)	Door Open Warning (DOW)
盲區監測(BSD)	Blind Spot Detection (BSD)
變道碰撞提醒(LCW)	Lane Change Warning(LCW)
駕駛員注意力警告(DAW)	Driver Attention Warning(DAW)
抬頭顯示(W-HUD)	Head Up Display (W-HUD)
車輛外型	Exterior
全景天幕	Panoramic glass roof
隱藏式門把手	Electronic hidden door handles

後風窗玻璃印刷天線	Rear windscreen mount antenna
尾門一鍵開啓/關閉	One-touch open/close tailgate
感應尾門(即腳踢式感應尾門)	Hand-free power tailgate
電動調節外後視鏡帶加熱功能	Electrically heated and adjustable exterior mirrors
外後視鏡電動摺疊	Electrically retractable exterior mirrors
外後視鏡倒車自動調節	Door mirror auto-tilt
外後視鏡位置記憶	Door mirror position memory
四門車窗遙控升降及一鍵升降帶防夾	Auto windows with anti-trap
前風擋和前排雙層隔音隔熱玻璃	Soundproof double glazed glass - windsheild and front door
後風窗電加熱除霜	Rear windscreen with electric heating and defrosting
車廂設備	Interior
多功能方向盤	Steering wheel mounted controls - Audio, phone, ACC and Multi-Function display
真皮方向盤	Genuine leather-wrapped steering wheel
10.25英寸全液晶儀表	10.25-inch LCD instrumentation
前排中央扶手收納空間	Centre console storage compartment
高級真皮座椅	Genuine leather-wrapped seats
主駕駛座椅8向電動調節	Driver seat 8-way power adjustable
主駕駛座椅4向電動調節腰撐	Driver seat 4-way lumbar power adjustment
主駕駛座椅電動調節腿托	Driver seat leg rest power adjustable
副駕駛座椅6向電動調節	Passenger seat 6-way power adjustable
前排座椅通風	Front seats ventilated & heated
前排副儀表臺雙杯托	Vice dashboard with dual cup holders
前排副儀表板升降式杯托	Front height-adjustable cap holder
後排中央扶手(帶雙杯托)	Rear row central armrest (with dual cup holders)
自動防眩目內後視鏡	Automatic anti-dazzle interior rearview mirror
雨量感應式雨刮	Rain sensing frameless wipers
噴水雨刮	Windscreen washer with wiper
金屬迎賓踏板	Metal door sill protectors
主副駕帶化妝鏡遮陽板	Front sunvisor with vanity mirror & lighting
多媒體設置	Entertainment
FM收音機	FM Radio
CarPlay®	*Apple CarPlay® (wireless)
藍牙連接	*Bluetooth® phone connectivity and audio streaming
15.6吋可旋轉多媒體屏幕	15.6 Inch intelligent Rotating touch screen display
丹拿音響(12個)	DYNAUDIO, 12 speakers
智能語音助手-英語、粵語	Voice assistant - English+Cantonese
地圖導航	*Satellite navigation
USB前排2個(typeA& typeC)	1 x USB-C & 1 x USB-A, Front
USB後排2個(typeA& typeC)	1 x USB-C & 1 x USB-A, Rear
OTA遠程升級	OTA updates
車輛燈光	Light
LED前大燈	LED headlight
"Follow me home"大燈延時關閉	Follow me home headlight
LED日間行車燈	LED daytime running light
LED貫穿式後組合燈	LED taillight light
後霧燈	Rear fog light
後動態轉向燈	Sequential rear indicators

LED高位制動燈	LED centre high mount stop light
多色律動內飾氛圍燈	RGB dynamic mood lights with rhythm function
前室內燈	LED front reading light
後側燈	LED rear side reading light
行李箱照明燈	Luggage compartment light
便利配置	Comfort and convenience
無鑰匙啓動系統	Keyless entry & start
NFC鑰匙	NFC card key
NFC手機鑰匙	BYD digital key
手機無線充電功能 × 1	Wireless phone charger × 1
12V車載電源接口	12V accessory socket
PM2.5 線淨系統	PM2.5 filtration system
PM2.5 高效過濾器(CN95)	PM2.5 high efficiency filter (CN95)
負離子發生器	Negative ion air purifier
自動雙溫熱泵空調	Automatic dual-zone heat pump air-conditioning
後排中央空調出風口	Rear central air vents
補胎工具	Tyre repair kit
隨車工具	Tool kit

### 備註：

- 續航里程根據駕駛習慣、路況及交通等不同會有差異，提供的數據為計算值，僅供參考。
- Bluetooth®是藍牙技術聯盟(Bluetooth SIG)的註冊商標。
- Apple CarPlay®是蘋果公司的註冊商標。
- 比亞迪提供3年免費地圖更新。
- 駕駛輔助系統旨在為駕駛員提供幫助，不能替代駕駛員對確保行車安全的責任。
- 根據市場實際情況，比亞迪汽車工業有限公司保有更改本手冊中車輛規格及配置的權力。

### Remark :

- The real range is influenced by many factors such as individual driving style, load, traffic etc. The declared range is estimated for reference only.
- Bluetooth® is a registered trademark of Bluetooth SIG, Inc. Compatibility and functionality varies depending on device.
- Apple CarPlay® is a registered trade mark of Apple Inc. Requires compatible device,USB connection.
- BYD provides free map update for 3 years.
- Driving assistance system is not a substitute for the driver's responsibility of the vehicle.
- BYD reserves the right to vary vehicle specifications and standard features from those detailed in this brochure.

## 整車尺寸 Dimensions



1,660 mm  
1,925 mm



2,930 mm  
4,830 mm



1,660 mm  
1,925 mm

1,620 mm







**BYD 天水圍 4S 店**

地址: 天水圍屏夏路 833 地段  
電話: 9219 2383

**BYD 元朗陳列室**

地址: 元朗宏業西街20號偉業大廈地下D室  
電話: 6790 5935

**BYD 沙田服務中心**

地址: 沙田大圍成運路 2-8 號地下  
電話: 2663 1008

**BYD 比亞迪荃灣4S店**

地址: 荃灣海盛路3號TML廣場  
電話: 2663 1809

**BYD 九龍灣陳列室**

地址: 觀塘區宏照路 15 號金聯大廈地舖  
電話: 9219 0681

**BYD 尖沙咀陳列室**

地址: 尖沙咀漆咸道南111-113號  
美華閣地下A號舖  
電話: 9219 0683

**BYD TIN SHUI WAI 4S Center**

ADD: Lot 833 Ping Ha Road,  
Tin Shui Wai, N.T.  
TEL: 9219 2383

**BYD YUEN LONG**

ADD: Room D, G/F, Hung Wai Industrial Building,  
20 Wang Yip Street West, Yuen Long  
TEL: 6790 5935

**BYD SHA TIN Service Center**

ADD: G/F., 2-8 Shing Wan Road,  
Tai Wai, Shatin  
TEL: 2663 1008

**BYD Tsuen Wan 4S Center**

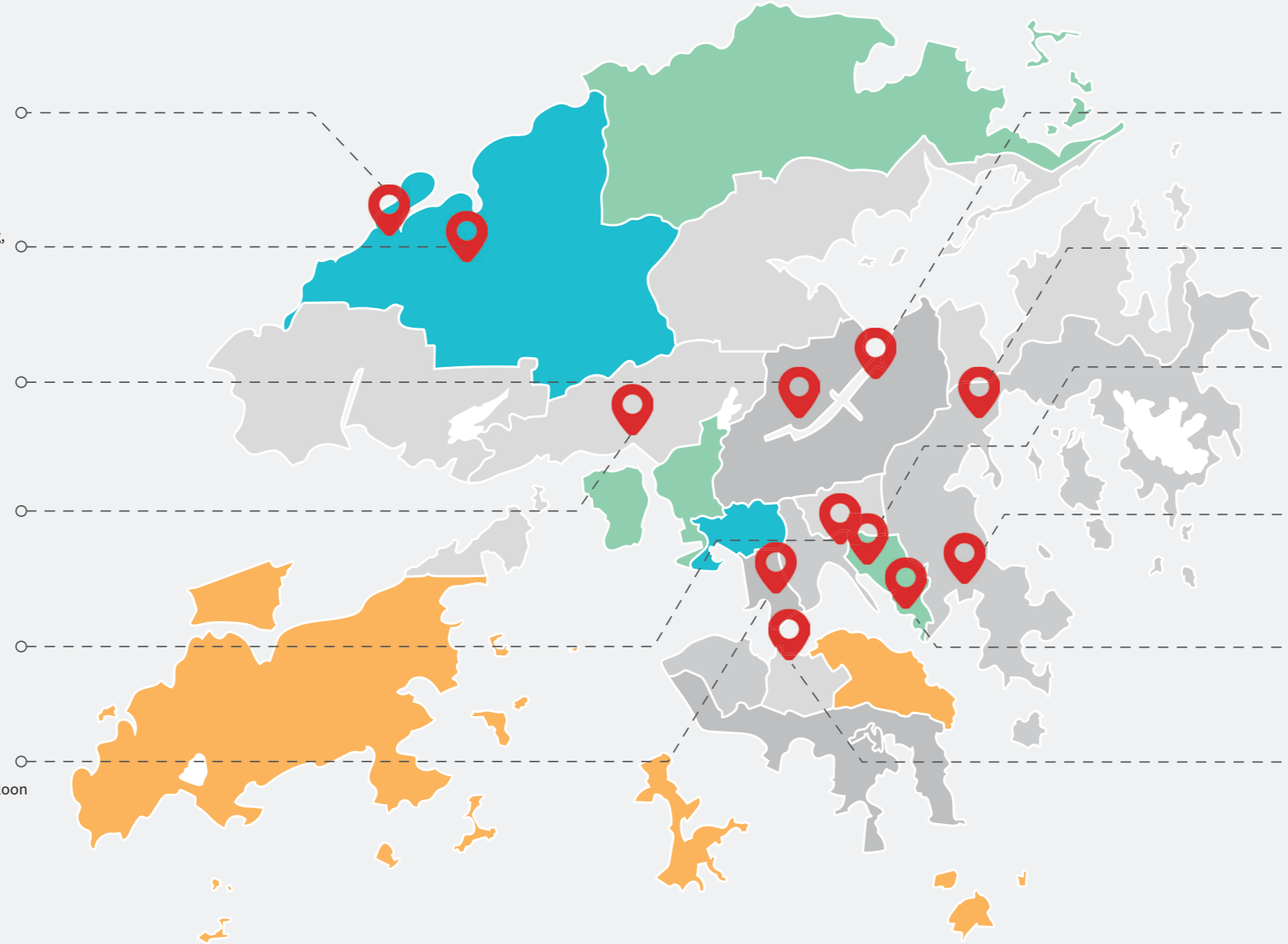
ADD: Unit G&H, G/F, TML Tower, No. 3  
Hoi Shing Road, Tsuen Wan  
TEL: 2663 1809

**BYD KOWLOON BAY**

ADD: G/F, Golden Harvest Building, 15  
Wang Chiu Rd, Kowloon Bay  
TEL: 9219 0681

**BYD TSIM SHA TSUI**

ADD: SHOP A, G/F, May Wah Court 111-113,  
Chatham Road South, Tsim Sha Tsui, Kowloon  
TEL: 9219 0683

**BYD SHA TIN**

ADD: Shop G51, G/F., Kings Wing  
Plaza 1, 3 On Kwan Street, Shatin  
TEL: 2663 0818

**BYD SAI KUNG**

ADD: Shop C1, WM Hotel, 28 Wai Man  
Road, Sai Kung  
TEL: 2663 0890

**BYD KOWLOON BAY Service Center**

ADD: 7F, Sunshine Kowloon Bay Cargo Centre,  
No. 59-63 Tai Yip Street  
TEL: 9219 5831

**BYD TSEUNG KWAN O**

ADD: Shop G-1B, Papillons Square, 21 Tong  
Chun Street, Tseung Kwan O  
TEL: 2663 0098

**BYD YAU TONG Service Center**

ADD: Shop A-B&D, G/F, Wing Shan Industrial Building,  
428 Cha Kwo Ling Road, Yau Tong  
TEL: 2663 2808

**BYD WANCHAI**

ADD: G/F., The Sun's Group Centre,  
200 Gloucester Road, Wanchai  
TEL: 9219 0183

**BYD 沙田陳列室**

地址: 沙田安群街 3號京瑞廣場一期地下G51號舖  
電話: 2663 0818

**BYD 西貢陳列室**

地址: 西貢惠民路28號 WM 酒店C1商舖  
電話: 2663 0890

**BYD 九龍灣服務中心**

地址: 三湘九龍灣貨運中心7樓大業街59-63號  
電話: 9219 5831

**BYD 將軍澳陳列室**

地址: 將軍澳唐俊街 21號翹匯坊G-1B  
電話: 2663 0098

**BYD 油塘服務中心**

地址: 茶果嶺道428號榮山工業大廈地下  
電話: 2663 2808

**BYD 灣仔陳列室**

地址: 灣仔區告士打道 200 號新銀集團地舖  
電話: 9219 0183