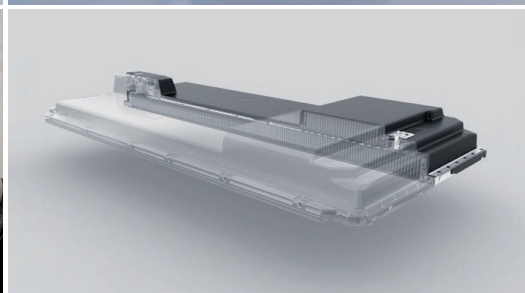


BYD

GO BEYOND HYBRID  
**SEALION 5 DM-i**



BYD COMPANY LIMITED

[www.byd.com](http://www.byd.com) +86-755-89888888

[Youtube.com/bydcompany](https://www.youtube.com/bydcompany)

No. 3009, BYD Road, Pingshan, Shenzhen, P.R. China



Facebook



Twitter



Tiktok



Instagram

# SPECIFICATIONS & CONFIGURATIONS

Powertrain		Active	Dynamic
Dimensions		4738x1,860x1,710	4738x1,860x1,710
Wheelbase		2,712	2,712
Ground Clearance		150	150
Turning Radius		6	6
Curb Weight		1,675	1,735
Cargo Capacity (L)		463/1410	463/1410
Seating Capacity		5	5
Fuel type	Plug-in hybrid	●	●
Drive mode	FWD	●	●
Power battery capacity (kW · h)	12.96	●	●
Pure electric driving range (working condition/km)	52	●	●
Emission standards	Euro V	●	●
Single-phase AC charging (kW)	3.3	●	●
Power of wall-mounted charging box (kW)	3.5	●	●
Smart charging	Make an appointment to charge	●	●
Feedback control system	Brake feedback control system	●	●
Front hatch support	Air spring of front hatch cover	●	●
Roof rack form	Matte roof rack	—	●
Antenna form	Shark fin antenna	●	●
Unlocking form of charging port cover	Electrically unlocked	●	●
Electric tailgate	Electric opening	—	●
Tire size	18 inches	●	●
Steering wheel material	Imitation leather	●	●
Instrument form	Full LCD meter	●	●
Instrument Size (inches)	8.8	●	●
Glasses case	Roof glasses case	●	●
Mobile phone wireless charging	Front row 15 W single charger	—	●
The driver's sun visor	Visor with cosmetic mirror (with illuminating lamp) for main driver	●	●
Visor for front passenger	Sun visor of front passenger with cosmetic mirror (with lighting lamp)	●	●
Sunroof	Electric sunroof with sunshade	—	●
12V vehicle power interface	12V vehicle power interface	●	●

Engine & Transmission		Active	Dynamic
System total max power		156 kW / 212 HP	
System total max torque (N·m)		300	
Engine max net power (kW)		72	
Rev. at max power (rpm)		6000	
Engine max torque(N·m)		122	
Rev. at max torque (rpm)		4000-4500	
Electrical motor max power (kW)		145	
Electrical motor max torque (N·m)		300	
Engine & Transmission			
Displacement		1498 cc/1.5 L	
Cylinder		4	
Transmission		Automatic	
Control Spec		Active	Dynamic
Front suspension	McPherson style	●	●
Rear suspension	Multi-link type	●	●
Smart entry mode	Keyless entry	●	●
Smart start mode	Keyless start	●	●
Steering column adjustment	Manual 4-way adjustable	●	●
Security Spec		Active	Dynamic
Air Bag	Driver & Front passenger airbags (2)	●	●
	Front side airbags (2)	●	●
Air Curtain	Front and rear integrated side safety air curtain	●	●
Vision aid	360 Camera	—	●
	Reverse Camera	●	—
Safety assist system	Anti-lock brake system (ABS)	●	●
	Electronic Vehicle Stability System (ESC)	●	●
	Intelligent dynamic braking system	●	●
	Park Brake Deceleration Control (CDP)	●	●
	Vehicle Dynamic Control (VDC)	●	●
	Electronic Brakeforce Distribution (EBD)	●	●
	Hill Start Control (HHC)	●	●
	Comfort Brake Function (CST)	●	●
	Anti-rollover control system (RMI)	●	●
	Hill Descent Control (HDC)	●	●
Driving assistance	Adaptive Cruise Control (ACC)	●	●
	Traffic sign recognition	●	●
	Intelligent Speed Limit Information (ISLI)	●	●
	Intelligent Speed Limit Control (ISLC)	●	●
	Automatic Emergency Braking (AEB)	●	●
	Forward Collision Warning (FCW)	●	●
	Rear Collision Warning (RCW)	●	●
	Lane Departure Warning (LDW)	●	●
	Emergency Lane Keeping Assist (ELKA)	●	●
Driving assistance	Blind Spot Detection (BSD)	●	●
	Front 2 parking radar	—	●
Parking radar	Rear 4 parking radar	●	●
Tire pressure monitoring system	Direct tire pressure monitoring system	●	●
Safety accessories	Tire repair device	●	●
Seat Spec		Active	Dynamic
Seat distribution form	2 + 3 seats in two rows	●	●
Seat reclined	Split Fold 2nd Seats (60:40)	●	●
Driver's seat	6-way electric adjustment of driver's seat	—	●
	Heated & ventilated seats (Driver)	—	●
	Integral headrest for driver's seat	●	●
Passenger seat	4-way electric adjustment passenger seat	—	●
	Front passenger seat integral headrest	●	●
Second row seats	Manual adjustment of the headrest of the second row seat	●	●

Multimedia Spec		Active	Dynamic
The DiLink ecosystem	The DiLink ecosystem	●	●
Radio	FM radio	●	●
Central control screen size	12.8 inches	●	●
Mobile phone	CarPlay	●	●
interconnection/mapping	Android Auto	●	●
Intelligent voice control system	Dual-voice zone voice interaction system	●	●
Number of speakers	6 speakers	●	●
USB interface	Front Type-C connector (1)	●	●
	Front Type-A connector (1)	●	●
	Second-row Type-C connector (1)	●	●
	Second-row Type-A connector (1)	●	●
Lighting Spec		Active	Dynamic
Headlights	LED headlights	●	●
Headlight adjustment	Manual headlamp height adjustment	●	●
Light assist	Automatically turn on the headlight	●	●
	"Follow me home" headlamp early on/delayed off function	●	●
	LED daytime running lights	●	●
Rear combination lamp	Penetrating LED rear combination lamp	●	●
Dynamic turn signal	Rear dynamic turn signal	●	●
High mounted stop lamp	LED high mounted stop lamp	●	●
Charging port lamp	Charging port lamp (monochrome)	●	●
Interior lights	Driver's foot lamp	●	●
	Front passenger's foot lamp	●	●
	Auxiliary dashboard lamp	●	●
	Luggage compartment lighting	●	●
	Glove box light	●	●
Door light	Front door lamp (LED)	●	●
Indoor light	Front interior light (LED)	●	●
	Rear middle interior light(LED)	●	—
	Rear double side interior light(LED)	—	—
Glass and rearview mirror Spec		Active	Dynamic
Front wiper	Intermittent boneless wiper	●	●
	Rainfall induction type wiper	●	●
Rear wiper	Rear wiper	●	●
Front windshield	UV protection	●	●
Rear windshield	UV protection	●	●
Windshield defogging and defrosting	Front windshield defogging and defrosting	●	●
	Rear windshield electric heating defogging and defrosting	●	●
Window glass lift	Four-door window one-key lifting with anti-pinch function	●	●
Outside rearview mirror	Exterior rear-view mirror of the same body color	●	●
	Electric adjustment of lens	●	●
	Heating and defrosting	●	●
	Electric folding	—	●
	Exterior rearview mirror foot lamp	●	●
	Outside rearview mirror blind area indicator lamp	●	●

Note: "—" means "not available", "●" means "available","○" means "optional".

Notice

Specs updated: November, 2025

① Actual range will vary depending upon driving/charging habits, speed, conditions, weather, temperature, and battery age. The battery capacity is initial capacity. It will decrease with time and use. The battery age and outside ambient temperature both play a role in charging times.

② The above specifications are for the standard vehicle. It is subject to regional needs and regulations. Some vehicles shown include optional equipment that may not be available in all the regions. All technical specifications subject to change without notice. Visit BYD dealer for more details.

③ Please contact sales team to confirm whether these networking-related functions and services are available.

Interior Color Options



Black

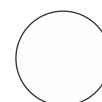
Exterior Color Options



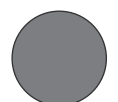
Deep Sea Blue



Cosmos Black



Aurora White



Harbour Grey